



Beyond the Cabochon (Sat 10/24/2009 9am - 5:30pm at 20 Third Ave Long Branch NJ, Suite 202B)

Located at the Shore Institute of the Contemporary Arts

Faceted Gem Setting for the Intermediate Silver Smith (\$85 per session + \$10 supply fee, limit 4 students per session)

Contact: Gary Snyder - 732-995-6721, lgd@littlegreydog.com, or info@sica.org to enroll. Cutoff for enrollment is 10/20/2009.

If you wish to be notified about future workshops and classes, please subscribe to my SICA jewelry project mailing list here: [Gary Snyder's Mailing Lists](#)

This 8 1/2 hour workshop introduces the tools and techniques used to set precious and semi-precious faceted gem stones in the context of fabricated and cast Sterling Silver designs.

Targeted at jewelry artists with basic fabrication skills, instruction will focus on setting small round gems. Basic fabrication techniques will be reviewed with the participants as needed.

Participants should be familiar with the use of a jeweler's piercing saw, and be familiar with basic hard soldering techniques. Basic studio safety will be reviewed.

Participants should bring safety equipment (safety glasses are required for the buffing and torch use - the studio has a single pair to share). Participants may wish to use a respirator or filter in the buffing area.

Participants should bring their own hand tools, if they have them (The studio has a limited number of these items to share during the workshop)

- Digital Calipers with readout to 1/100th of a millimeter and accuracy to 1/10th of a millimeter (1 available to share)
 - I have 4 available for purchase @ \$20 each - contact me to reserve.
- Saw frame with 2/0 and #1 blades

- Files - needle, inside ring, and bastard
- Jewelry Pliers - particularly parallel jaw and nylon jaw flat nose (if you own them)
- Sand papers (180,220,320,400,600 and 800 grit)
- Old Alan wrench/hex key (min 3/16ths inch wide) - Used to make a setting punch
- Silver - 12 ga sheet, 20 ga sheet, 24 ga sheet
 - (The supply fee of \$10 includes 3" x 6mm of 2mm Sterling Silver stock and a 4mm round gemstone - all that's needed to complete the flush set ring)
 - If a participant wishes to complete additional projects, 12ga, 14ga or 16ga sheet will be required for ring shanks, 24ga sheet for fabricating tubing, 20ga sheet for pierced prong setting.

A limited amount of metal will be available for purchase during the class at a price of \$1 per gram.
- Drill bits, burs, pin vice - The following bits will be used: #59, #49, #42, #27. The following burs will be used: 3.8mm setting, 4.0mm setting, 3.5mm bud, 5.0mm 45degree hart. A tool kit including these items + a round graver and pin vice will be available for purchase at a price of \$48. The studio has 1 of each item to share among the class.
- pin vice
- #52 round graver with handle
- Wood Ring Clamp (studio has one to share).

Other tools needed to complete the settings away from class (Attendees will need these in their own shops to "do this at home")

- Bench vise with safety jaws
- Small rotating vise (optional)
- Flex shaft or cordless drill
- Torch and hard solders (acetylene/air preferred, propane air could work (depending on available tips), oxy/(any gas) less preferred for silver work
- Soldering surface
- Flux
- Third Hand with cross lock tweezers (optional but really handy)
- Pickle Pot (\$10 crock pot from Wal-Mart) and pickle (PH-Minus or PH-Down from the hardware store/pool supply store)
- Polishing Arbor or polishing wheels for rotary tool/flex shaft
- Ring mandrels - solid steel and slotted steel
- Center punch and/or round graver - round graver required for bead and stitch settings
- Brass caliper
- Design block
- (optional) Draw plate (for tubing fabrication)
- ?? more -- discuss during workshop.

Topics

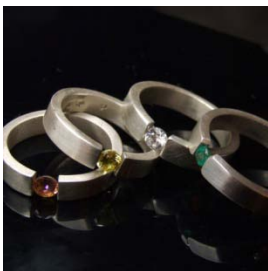


- Hey Hi! I'm me - who are you?
 - Where do you buy (tools, stones, metal?)
 - Tool construction and preparation
 - How to make a point burnisher (needed for flush setting)
 - How to prepare a round graver (needed for bead settings and other tasks)
 - Flush Setting
 - What is it? How does it work?
 - Selecting gems for flush (or other) setting
 - Why ebay might be cheap, but not inexpensive!
 - Why diamond, sapphire, and ruby are among the most popular gems at the mall jewelry stores.
 - Hold it! Why a pin vise is a cool tool you really need to own.
 - Design considerations when using a flush setting
 - Metal thickness
 - Stone depth / contact with culet / culet profile / good cut = less work!
 - Project - flush set ring in a pre-selected size
 - The circle for jewelers
 - How to make a metal circle with a given outside diameter (for example, when making an insert for a ring)
 - How to make a metal circle with a given inside diameter (for example, when making a bezel for a round stone)
 - How to measure out sheet to construct a ring having a specific size.
 - How to measure out sheet to fabricate tubing to set a specific size round stone.
 - Measure - cut - join the ends. How to get a perfect seam in a ring shank
 - Soldering the ring into a closed form.
 - Truing the circle on a mandrel.
 - (Optional) building thickness in preparation for flush or bead settings
 - Finishing the shank - how to get a mirror shine (if that's what you want).
 - Preparing the seat for stone setting
 - Mark the center (round graver and/or center punch)
 - Drilling out in stages
 - Selecting the proper setting bur
 - Cutting the seat by hand / fitting the stone
 - Setting the stone using a point burnisher
 - Final polish / tumbling
 - What to do when you oops (seat is too big / too deep)
-

- Tube Setting



- The circle for jewelers revisited
- What wall thickness to choose.
 - build or buy? Tubing fabrication charges.
- Calculating the sheet size
- Forming the tube
- Drawing down
- Soldering the tube
- Drawing down to size.
- Quicky tube settings (for diamonds, sapphires, rubies, CZ and the lab varieties thereof)
- The old fashioned way (for quartzes (amethyst, citrine, prasiolite, etc, and topaz, and other softer gems))
 - Making a setting punch (if time permits)
 - Punch setting
- Basic Bead Setting
 - Preparing the seat (This should sound familiar by now!)
 - Use of the graver
 - Beading tools and their use
- Reverse Bead Setting
 - It is as easy as it looks.
- Tension Setting (Time permitting)



- Special considerations
 - Metal selection / metal thickness / metal preparation
 - Sizing - allowing for the stone
- Cutting the seat
- Setting technique

- Caveats - (!No index finger rings in silver!!!)
- Stitch Setting (Time permitting)
 - How to deal with those teeny cabs - an alternative to Lilliputian bezels - for cabochons 3mm or less in diameter
- Conclusion - questions - credits
 - Thanks to Alan Revere and John Cogswell
 - Books you should buy if you can find them and afford them